



Pittsburgh Regional Business Credential: A Public / Private Partnership

Special Thanks to:

Jonathan Henry

City of Pittsburgh

Office of Emergency Management

(412) 255-2633

Jonathan.Henry@city.pittsburgh.pa.us



Agenda



- ▶ Background / Importance of Credentials
- ▶ Credential Q&A
- ▶ Application Process
- ▶ Format of Credential
- ▶ Future Developments
- ▶ Discussion



Background / Importance of Credentials



- ▶ Originated for public service personnel
 - Military and non-military
- ▶ Credentials have been used for
 - Positive identification
 - Logical access to secured (government) systems
 - Physical access to secured / restricted areas
- ▶ Businesses use-access to otherwise restricted areas
 - Damage mitigation / assessment / salvage
 - Retrieval of critical business materials
 - Other initial recovery activities



Credential Q&A



- ▶ *What is the Pittsburgh Regional Business Credential?*
- ▶ *Who sponsors it?*
- ▶ *How is it activated? How will we know when restricted areas become open to holders of the Credential?*
- ▶ *When can I use the Credential?*



Credential Q&A



- ▶ *Which of my business locations are covered by the Credential?*
- ▶ *Who controls access and how will they know to give holders of the Credential access when appropriate?*
- ▶ *Does the Credential guarantee me access?*
- ▶ *What happens if I present my Credential but I am still denied access?*



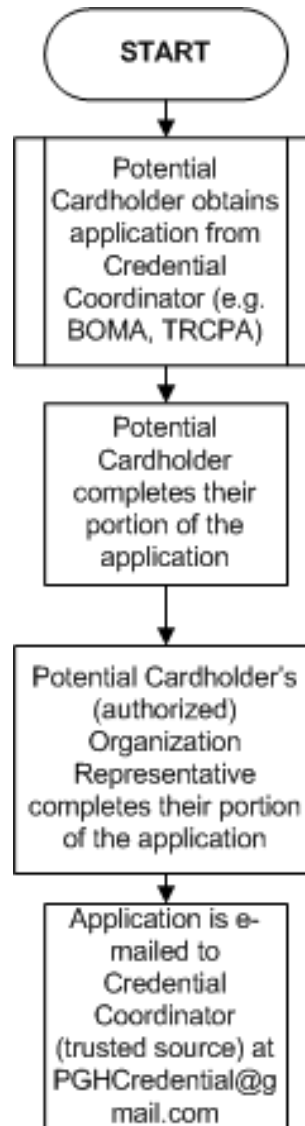
Credential Q&A



- ▶ *How much does the Credential cost?*
- ▶ *How many Credentials can be issued to my company's employees?*
- ▶ *When does the Credential expire?*
- ▶ *What if a Credential is lost or stolen?*
- ▶ *Who is liable if a Credential holder is injured while in the restricted area?*
- ▶ *How can my company enroll?*



Application Process Flow (1 of 2)



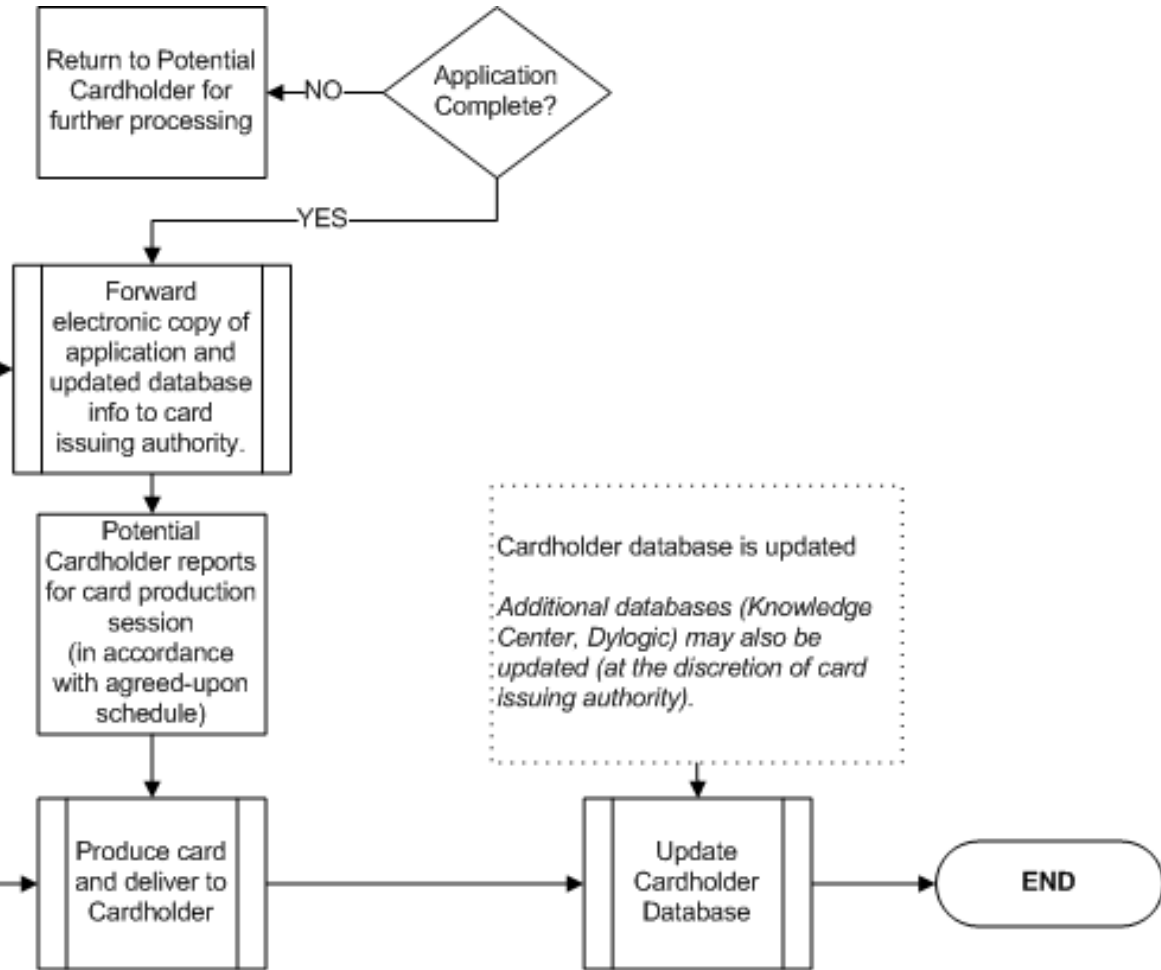


Application Process Flow (2 of 2)



- Credential Coordinator adds electronic signature (approval) to Application form
- Update spreadsheet with data from Application form (to facilitate card production)
- Electronically forward spreadsheet to card issuing authority
- Electronically forward fully-executed Application form to card issuing authority.
- Electronically notify Potential Cardholder of preliminary approval.

- Verify that all fields have been completed
- Verify Potential Cardholder identity (using I-9 standards)
- Produce credential
- Deliver credential to Cardholder
- Update Application form and return it to Credential Coordinator



Cardholder database is updated
Additional databases (Knowledge Center, Dylogic) may also be updated (at the discretion of card issuing authority).



Format of Credential



- ▶ Pittsburgh Regional Business Credential meets the FIPS 201 (Personal Identity Verification) Standard
- ▶ Standard format among business community (future)





Future Developments



- ▶ Future partners:
 - Pittsburgh Regional Business Coalition for Homeland Security (PRBCHS)
 - Information Systems Security Association (ISSA)
 - Building Owners and Managers Association (BOMA)
 - FBI – InfraGard Pittsburgh
 - American Society for Industrial Security (ASIS)
 - Others?
- ▶ Porting credentialing data to the Knowledge Center
- ▶ Broader availability – throughout Region 13
- ▶ Self-production



Discussion